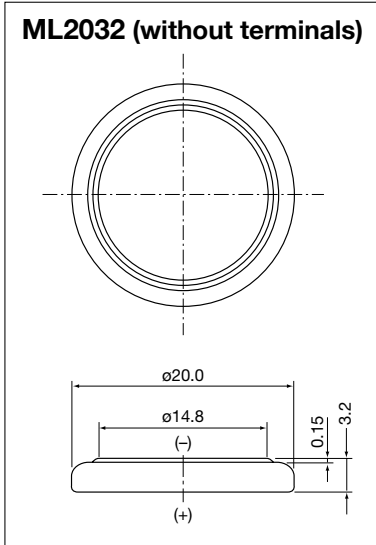


ML2032 (65mAh) Drawings of Batteries with Terminal or Wire Connector

External Dimensions (unit: mm)

● Horizontal & Through hole Type



ML2032 T6	ML2032 T6 TUBE	ML2032 T14
ML2032 T25	ML2032 T32	

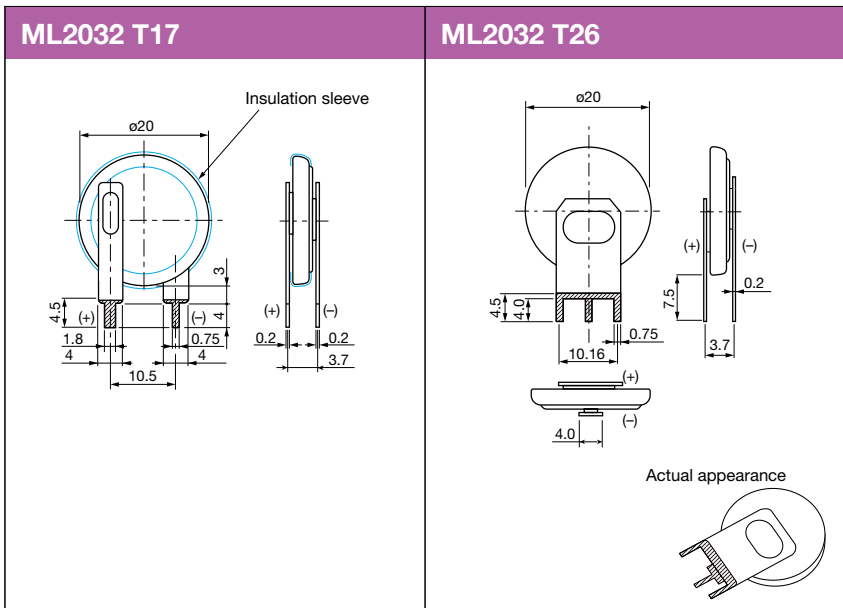
Tin plating

ML2032 (65mAh)

Drawings of Batteries with Terminal or Wire Connector

External Dimensions (unit: mm)

- Vertical & Through hole Type



Tin plating

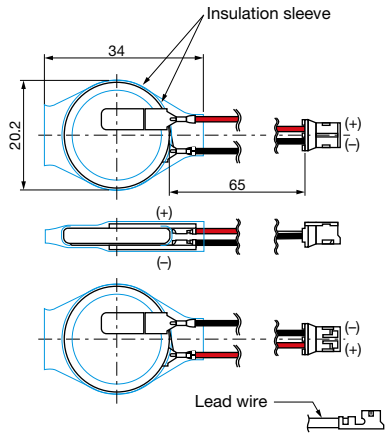
ML2032 (65mAh)

Drawings of Batteries with Terminal or Wire Connector

External Dimensions (unit: mm)

● Wire connector Type

ML2032 WK2



Housing: ZHR-2 (JST)
Contact: SZH-002T-P0.5 (JST)
Lead wire: AWG26 UL1571