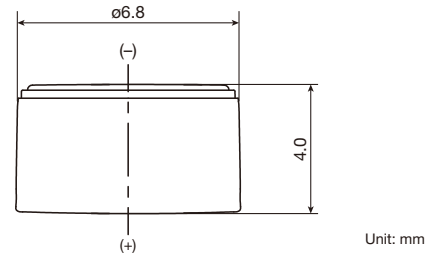


Data Sheet

CLB640

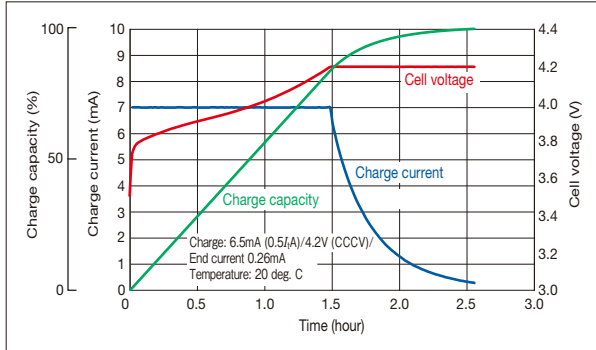
Model		CLB640
Initial dimensions (mm) ^{*1}	Diameter	6.8
	Height ^{*2}	4.0
Weight (g) ^{*1}		0.4
Charge (CCCV)	Max. voltage (V)	4.2
	Standard current (mA)	6.5
	Temperature (deg. C)	0 to +45
Discharge (CC)	End voltage (V)	3.0
	Max. current (mA)	13
	Temperature (deg. C)	0 to +45
Nominal voltage (V)		3.8
Nominal capacity (mAh) ^{*3}		13



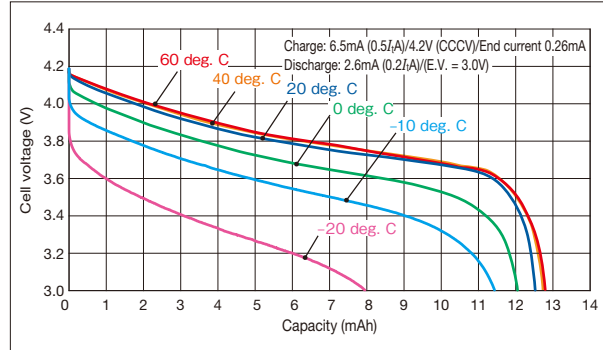
- UL 1642 recognition (Technician Replaceable) scheduled.
- IEC 62133-2 recognition scheduled.
- UN 38.3 (Dangerous Goods Transportation Regulations) recognition scheduled.

Characteristics

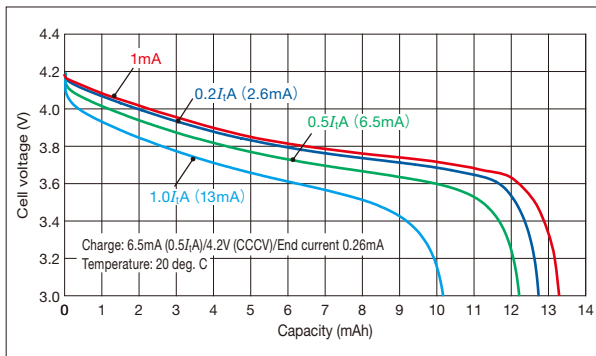
● Charge characteristics



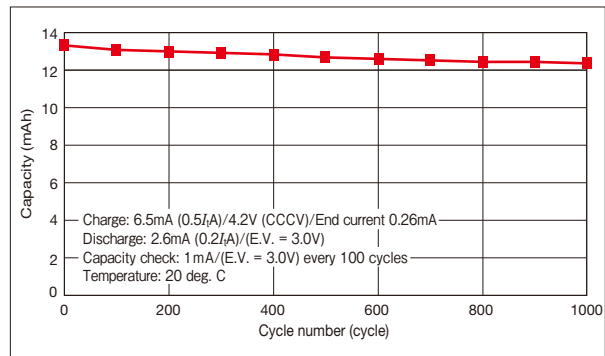
● Discharge temperature characteristics



● Discharge load characteristics



● Cycle life characteristics



*1 Dimensions and weight are for the battery itself, but may vary depending on terminal specifications and other factors.

*2 100% charged

*3 Nominal capacity is according to the following conditions: Charge: 0.5I_t/4.2V (CCCV)/End current 0.03I_t, Discharge: 1mA/E.V. = 3.0V, Temperature 20 deg. C